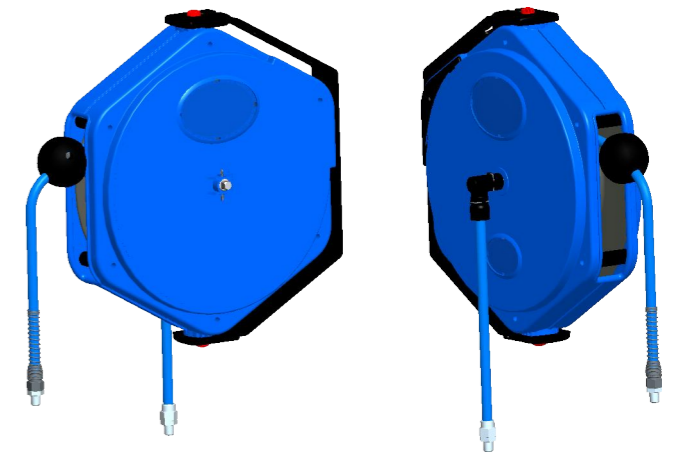
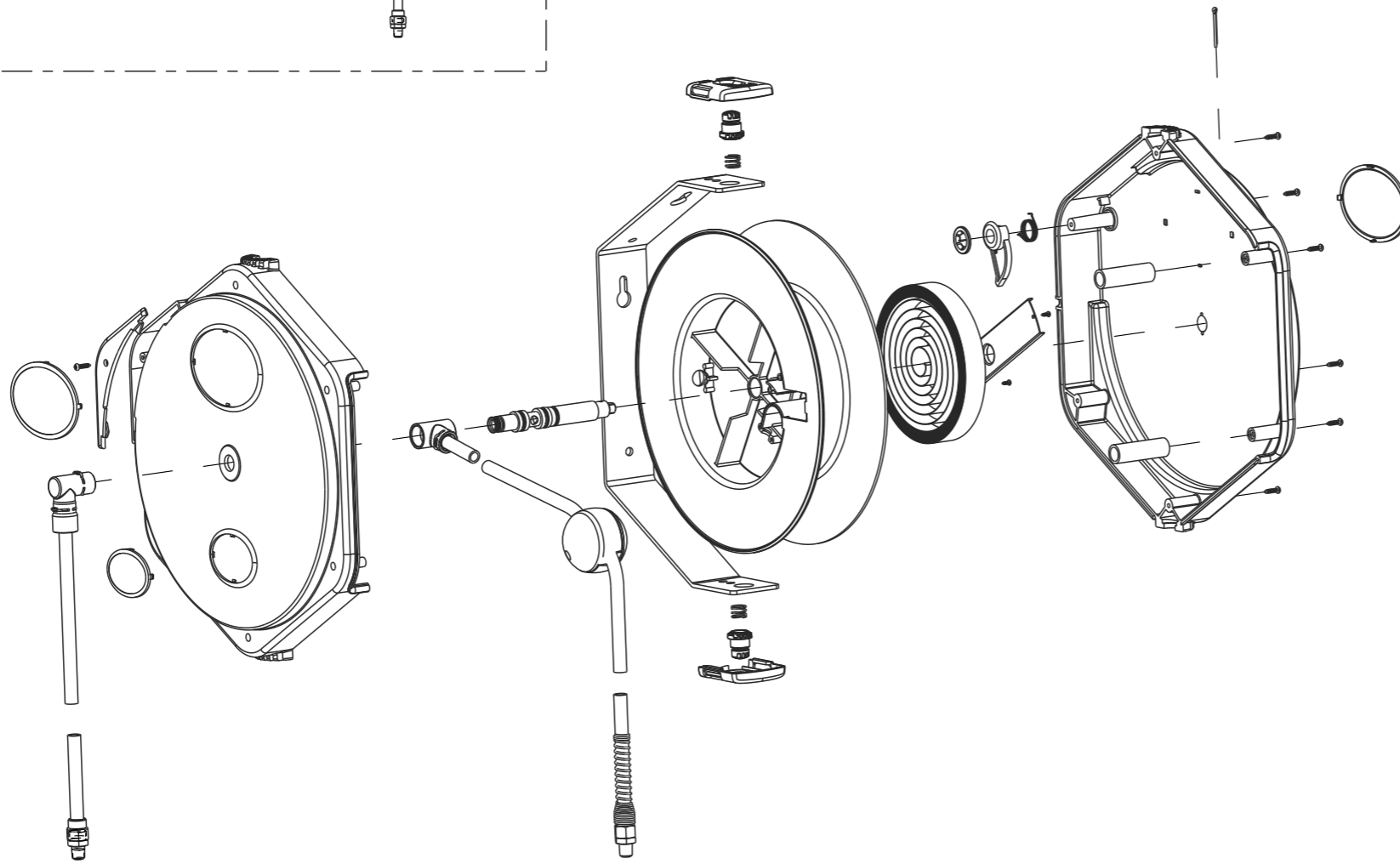
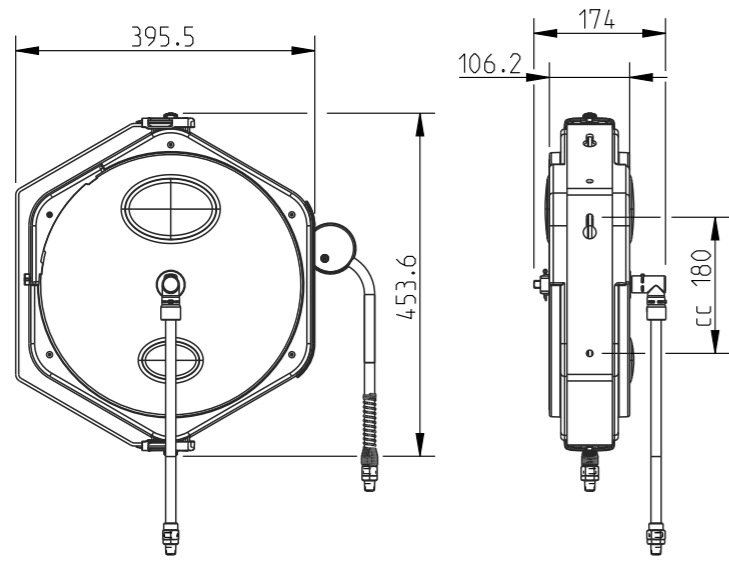


Diese Zeichnung darf weder ganz noch teilweise ohne unsere ausdrückliche Genehmigung kopiert oder auf andere Weise vervielfältigt werden. Alle Rechte vorbehalten.

Denna handling får ej utan vårt medgivande delges annan, kopieras eller eljest obehörigen användas. Överträdelse härvid beivras med stöd av gällande lag. This document must not be copied, either completely or in part, without permission. Any infringement will have legal consequences.



1:10

37	1	Washer	Steel
36	1	Washer	Steel
35	2	Union half nipple	Brass, plated
34	1	Trigger	Plastic
33	1	Text plate	Plastic
32	2	Text plate	Plastic
31	1	Swivel nut	Brass, plated
30	1	Swivel nut	Brass
29	1	Swivel connection	Plastic
28	1	Support bracket	Steel
27	2	Stop ball	Plastic
26	1	Spring	Steel
25	2	Spring	Stainless steel
24	1	Spring	Stainless steel
23	1	Split pin	Steel
22	1	Side cover	Plastic
21	1	Shaft "hose"	Al
20	2	Screw	Steel
19	7	Screw	Steel
18	2	Screw	Steel
17	1	Reel	Plastic
16	5	Polyurethane hose	-
15	2	Outer casing	Plastic
14	2	O-ring	NBR
13	1	O-ring	NBR
12	2	O-ring	NBR
11	2	Nipple 9,5X13,5	Aluminium
10	2	Locking plate	Plastic
9	1	Hose protector	Steel, plated
8	1	Hose clamp	Stainless steel
7	2	Guide roll	Plastic
6	2	Guide Bolt	Plastic
5	3	Clamp	Stainless steel
4	1	Casing right	Plastic
3	1	Casing left	Plastic
2	1	Bracket	Steel
1	1	Angle connection	Plastic

Detalj Item	Antal Quant.	Benämning Description	Material Material
-------------	--------------	-----------------------	-------------------

Product no: 19_911_5120			
Max working pressure:	12	bar	
Hose length:	14	m	
Sealing material:	NBR		
Temperatur range:	-20°C - +60 °C		
Connection	R 1/4" male		

<b>CEJN</b>	Skala Scale	3:20	Ritad Drawn	JUOL	Kontr. Checked	LHe	Godk. Appr.	OG	ÄM nr. Alt. no.	-	Dat. Date	14-12-17
	Assembly drawing							Ritning nr./Drawing No.		50_911_5120		Utg./Issue